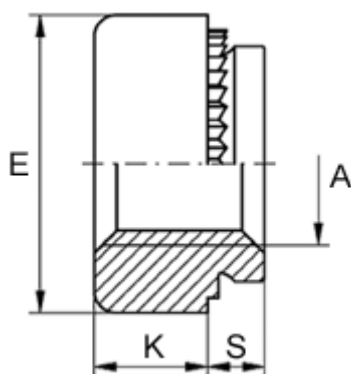


Data Sheet



Article number: 12500000060500
Description: KLEE-coil 500 000 060.500
M6 Stainless 1.4305

Measures



| | |
|---------------------------------|--------------|
| Female thread A | = M6 |
| Height K | = 4.0 |
| Max recess height | = 1.0 |
| Min distance to edge | = 5.0 |
| Outer diameter E | = 11.0 |
| Plate thickness | = 1.0 to 1.3 |
| Recommended bore diameter +0.05 | = 9.00 |